

# R&R ReportWorks Version 12 Installation Guide



COPYRIGHT

©2005 Liveware Publishing Inc.

All rights reserved.

Liveware Publishing Inc.  
1406 Society Drive  
Claymont, DE 19703

**This manual is copyrighted and all rights are reserved. This document may not, in whole or part, be copied, photocopied, reproduced, translated, or reduced to any electronic medium or machine readable form without the prior written consent of Liveware Publishing Inc.**

Printed in the United States of America

*Trademarks and Acknowledgments*

R&R Report Writer is a trademark of  
Liveware Publishing Inc.

Portions of the imaging technology of this product are copyrighted by  
Lead Technologies, Inc.

All Avery product code numbers are trademarks of the  
Avery Dennison Corporation.

All other product names and logos in this manual are used for  
identification purposes only and may be trademarks or registered  
trademarks of their respective companies.



# Welcome to R&R ReportWorks Version 12

Thank you for choosing to install R&R ReportWorks Version 12. This release of R&R combines the Xbase and SQL editions of R&R into a single installation and contains a number of new features and enhancements.

The information in this help file is designed to familiarize you with the components of Version 12 and guide you through the installation process.

A README.RTF file can be found on the root directory of the installation CD. This README contains the most recent information regarding Version 12 so you should take the time to review this document. At the end of installation, the installer will allow you to view the README.

## Installation Prerequisites

R&R Version 12 requires approximately 50 MB (30MB SQL / 20MB Xbase) of available disk space.

You can install R&R Version 12 on machines running the following operating systems:

- Windows 95
- Windows 98
- Windows NT
- Windows 2000
- Windows XP

## Installed Components

The default installation directory is c:\program files\ReportWorks.

ReportWorks installs the following components:

- R&R for Windows Xbase Edition Version 12 (RRW.EXE/RRWRUN.EXE)
- R&R for Windows SQL Edition Version 12 (RSW.EXE/RSWRUN.EXE)
- Utility Programs
  - Data Dictionary Editor (\RL\DATADICT.EXE)
  - Quick Runtime Shortcuts (RRICON.EXE)
  - Rapid Runner (RapidRun\RAPIDRUN.EXE)
  - Report Converter (RRCNVRT.EXE)
  - Report Librarian (\RL\RL.EXE)

## Installation Procedure

To begin the installation process, insert the Version 12 CD into a CD ROM drive. If the install program does not automatically execute, you can run SETUP.EXE from the root directory of the CD.

After a pause for initialization, the first of several Startup dialog boxes displays.

In the first Welcome dialog box, click on Next to continue the installation. Note that there is also a Cancel button on each installation screen that will allow you exit the setup program.

The next Software License Agreement screen displays the License Agreement for Version 12. You must select Yes to accept the agreement to proceed with installation.

### **User Information**

The User Information dialog asks you to enter your Name, Company and Serial number. The 16 digit serial number is found in your Version 12 package. If you doing a Workstation installation by running SETUP.EXE from a server installation, the user information screen will only show Name and Company and will not ask for a serial number.

You must enter a Name. The name is used for internal identification only and can be any entry you wish. The Company field is optional.

The serial number field if show must be a valid 16 digit R&R Version 12 serial number to proceed.

### **Workstation/Server Selection**

Then the Server Installation dialog ask you to select either Workstation or Server. Choose server if you are going to install R&R for use from multiple machines. See the section on Network Server Installation for more information. Otherwise accept the default of Workstation. Then press Next.

### Setup Type

The Setup type screen contains 3 radio buttons that allow you to choose either a Typical, Compact or Custom installation. Unless you want to conserve disk space or explicitly choose the individual components to install, you should accept the default of Typical.

The following table describes the components you can choose from when you do a Custom setup. The first two columns in the table indicate which components are installed when you do a Typical or Compact setup.

<i>Typical</i>	<i>Compact</i>	<i>Component</i>	<i>Sub Component</i>	<i>Description</i>
✓	✓	Report Designer		The interactive program and supplementary files used to design, view, print, and export reports.
✓		Runtime		The Runtime executable, DLL, OCX, and related files used to run existing reports programatically and from the command line. They rely on Report Designer files assumed previously installed.
✓	✓	Help	Report Designer	This is the help file that accompanies the Report Designer.
✓			Runtime	This is the Developing Applications help file, which provides on-line documentation for using the runtime executable, DLL, and OCX.
✓		Utilities	Dictionary Editor	This is a utility that helps you create and edit data dictionaries. It relies on Report Designer files assumed previously installed.
✓			User Management	The User Management program is used to add, delete, and unlock serial numbers.
✓			Report Conversion	If you use more than one product or version from our family of report writers, you can use this utility to convert your reports.
✓			Shortcut Maker	This is a utility that helps you quickly create runtime control files and shortcuts with which to run your reports. It relies on Report Designer files assumed previously installed.
✓		Sample Files	Reports and Data	All of the examples. These can help you get a quicker start when creating new reports, and show different uses of the product.
✓			Runtime Report	Runtime sample uses a control file to preview one of the sample reports installed with the Sample Reports and Data
✓			Templates	Sample template reports show how you might save some time by saving some common report settings.
✓			OCX Application	Sample Visual Basic program files that use the Runtime OCX.
✓	✓	ODBC	ODBC core files	The ODBC Data Source administrator files. Used for SQL only.
✓	✓		Individual MS and DataDirectODBC drivers	Only the MS dBase is selected by default since it is used for the R&R SQL sample reports.

### **Destination Directory**

At the bottom of the screen is the Destination Directory. You can change the Default of c:\program files\ReportWorks by clicking the Browse button at the lower right. This will allow you to select an existing directory or create a new directory for installation. After making your selections press Next.

The Select ODBC components screen applies to the SQL version only. You can select all, some or none of the listed files. After making your selections press Next.

The program will then proceed with file installation.

### **View the README**

When the install program finishes installing the components, you are then asked if you want to view the README file which contains the most recent information at the time of product shipment.

### **Product Registration**

A second question box then asks "Do you want to register online now"? If you select yes, your default browser will open the product registration page on the Liveware Publishing web site where you can enter your registration information.

The final SETUP dialog is an information box that indicates that Setup is complete.

### **Installed Program Items**

You will then have a new program item on your start menu for R&R Report Works. Within this item are three sub items with the following choices:

#### SQL Edition

- Convert Xbase Reports to SQL
- Developing Applications
- Report Designer
- Report Viewer
- Runtime Sample
- User Management

#### Utilities

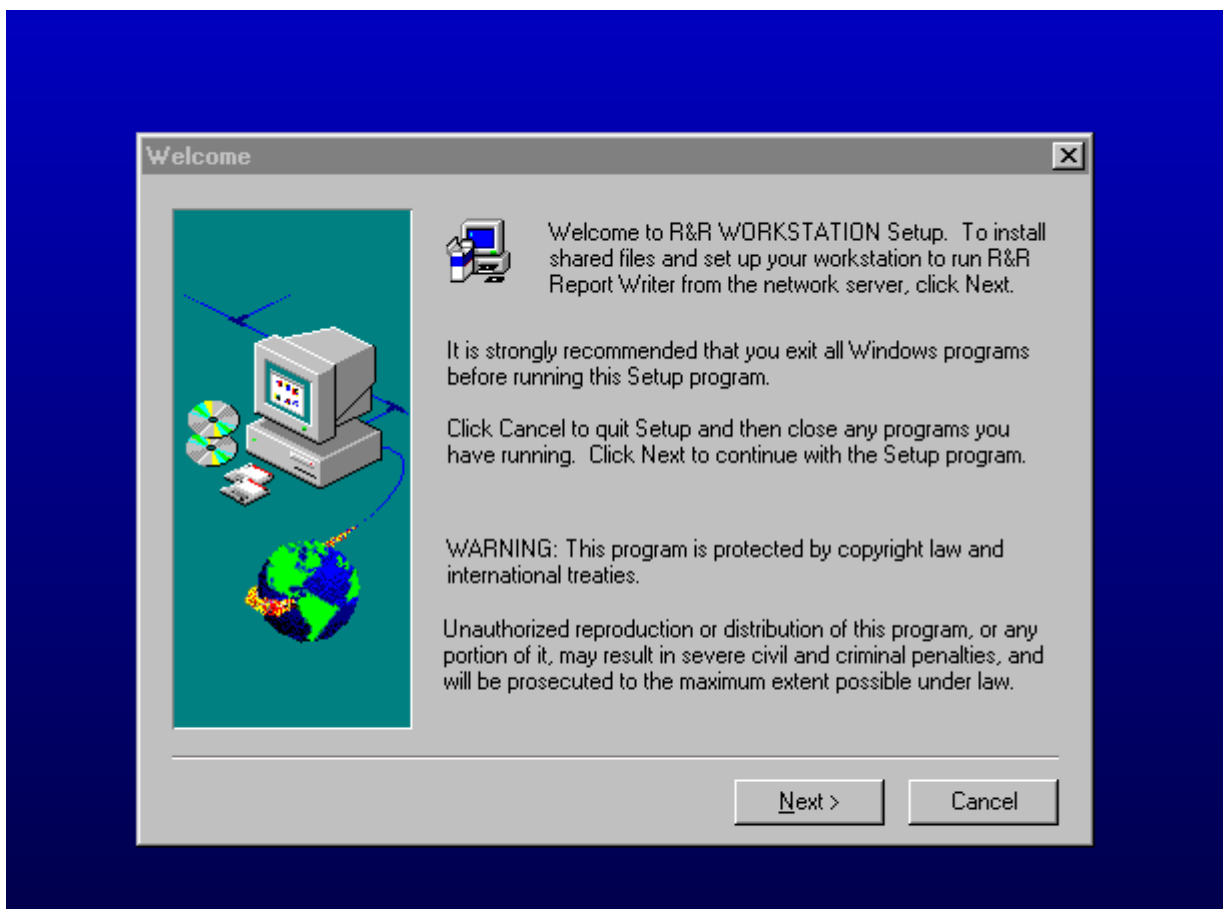
- Data Dictionary Editor
- Quick Runtime Shortcuts
- Rapid Runner
- Report Converter
- Report Librarian

#### Xbase Edition

- Developing Applications
- Report Designer
- Report Viewer
- Runtime Sample
- User Management

## Installing to a Network Server

When you install R&R Version 12 from the install CD, after you enter your user and license information, the next screen allows you to select either a Workstation or a Server installation. When you select Server, a copy of SETUP.EXE is installed to the destination directory along with the R&R program files. You then execute the installed SETUP.EXE at each workstation where you want to run Version 12. This will keep the main executable files in the install location but will copy the necessary system files to the local machine. When workstation setup is run from a server installation of R&R Version 12, users will see the screen below. Pressing the Next button brings up the license agreement screen followed by an entry screen for the user and optional company name. The installer then copies the required local files and sets up the R&R program group.



## Common installation questions

***Do I have to install both the Xbase and the SQL components?***

If you select an install type of Custom, you can select the individual Xbase and SQL components that you wish to install.

***Is the user/serial number I entered used for both the Xbase and the SQL components?***

Yes. The serial number that you enter during installation will be used for both the Xbase and SQL versions. Note that you can only use Version 12 serial numbers for installation. Serial numbers from earlier versions will not be accepted by the installer.

***Can I install this version to a network server?***

Yes. See the section on network server installation.

***How do I install additional serial numbers?***

After installation is complete, you can add additional serial numbers by running the User Management Program. Note that there is a separate user management executable for the Xbase (RRWUSERS.EXE) and the SQL (RSWUSERS.EXE) versions. You will need to add the serial number(s) independently to make them available for each version. The same serial number can added to each version.

***I already have an installed copy of a previous R&R version. How to I upgrade my current installation?***

See the section on Upgrading from an earlier version of R&R.

***How do I uninstall Version 12?***

The best method is to open the Windows Control panel, choose add/remove programs and then select R&R Report Writer, Version 12 from the list.

## Upgrading from an earlier version of R&R

If you are installing Version 12 on a machine has an existing installation of either R&R Xbase or SQL it is recommended that you back up any modified R&R files and then un-install that copy prior to the installation of Version 12.1.

What to back up:

- Any user function library (RR.UDF for Xbase, RSW.UDF for SQL)
- RSWSQL.INI (If modified after original installation. SQL only)
- RRW.SRT for Xbase, RSW.SRT for SQL (if modified after original installation)
- The initialization files \windows\RRW.INI for Xbase, \windows\RSW.INI for SQL
- Report Librarian data files (all files with extension DBF, CDX and FPT in the /RL subdirectory). The Version 12 Report Librarian will allow you to upgrade Version 9 report librarian files after installation.

You can then restore/upgrade these files after installation of Version 12.

## R&R REPORT WORKS LICENSE AGREEMENT

**PLEASE READ THIS LICENSE CAREFULLY BEFORE COMPLETING THE INSTALLATION AND SETUP OF THE SOFTWARE, OR USING OR REPRODUCING THE SOFTWARE. BY CONTINUING WITH INSTALLATION AND SETUP BEYOND THIS POINT, USING OR REPRODUCING THIS SOFTWARE, YOU ARE AGREEING TO BE BOUND BY THE TERMS OF THIS LICENSE. IF YOU DO NOT AGREE TO THE TERMS OF THIS LICENSE, PROMPTLY RETURN THE UNUSED SOFTWARE PACKAGE(S) TO THE PLACE WHERE YOU OBTAINED IT AND YOUR MONEY WILL BE REFUNDED.**

**1. DEFINITIONS.** As used in this Agreement: The term "Product" refers collectively to the compact disks or diskettes and the software programs recorded on them provided by Liveware Publishing Inc. ("LP") under the name R&R Report Works, and all updates subsequently provided by LP, if any; the term "Recorded Programs" refers to the software programs recorded on the compact disks, DVD's or diskettes; the term "Runtime" refers to the Recorded Programs listed in the Product's online "Help" as runtime files; and the term "Designated Computer" refers to either (i) a stand-alone workstation, or (ii) a networked workstation which does not permit the Recorded Programs to be shared with other networked workstations, unless a separate licensed serial number has been obtained from LP for each simultaneous, non-Runtime user.

**2. LICENSE.** LP grants you ("You"), the end user, a nonexclusive license: (a) to use the Recorded Programs on a single Designated Computer, and (b) for you to use, and to permit others to use, copies of the Runtime for the purpose of printing reports from report format files created by the Product or to define printer configurations or font information files for the printing of such reports. You agree that you will not use or permit the use of the Recorded Programs, other than the Runtime, in any manner that enables more than one person to use them at the same time. You may, however, use the Recorded Programs on a network, provided that you ensure that a separate licensed serial number has been obtained from LP for each simultaneous, non-Runtime user. You may transfer the Recorded Programs to another Designated Computer not more than once every thirty days, provided that the Recorded Programs are removed from the Designated Computer from which it is transferred. LP may terminate this license if You fail to comply with all the terms of this License. Upon such termination, You must destroy all originals and copies of the Product in Your possession.

**3. OTHER RESTRICTIONS.** You may not sell, rent, license, lend or otherwise transfer the Product to any other person or entity, except that You may transfer on a permanent basis all of Your license rights to the Product if You do not keep any copies of the Product or accompanying materials and the recipient agrees to the terms of this license. You must comply with the then-applicable United States export control laws in your use or transfer of the Product and accompanying materials. You may not modify, translate, reverse engineer, decompile or disassemble the Product. The Runtime may be copied for the purpose described in the license grant above, and, except for this specific use of the Runtime, you agree to copy the Recorded Programs only for backup purposes and for absolutely no other purpose. You also agree not to make copies of any other components of the Product.

**4. PROPRIETARY RIGHTS.** LP or its suppliers own the Product and all associated patent, copyright, trade secrets and other proprietary rights in the Product. No title to or ownership of the Product or any associated proprietary rights are transferred to You by this license.

**5. LIMITED WARRANTY.** LP warrants that, for ninety (90) days from the date of initial receipt, the Product will perform substantially as provided in the accompanying end user documentation. LP's and its suppliers' entire liability and Your exclusive remedy for failure of the Product to comply with this Limited Warranty shall be, at LP's option: (a) repair or replacement of the Product; or (b) return of the price You paid for the Product. To receive this remedy, you must return the Product to LP with a copy of Your receipt within ninety (90) days of the date You initially received the enclosed Product. Any replacement Product will be warranted for the remainder of the original ninety-day warranty period or thirty (30) days from the date You received the replacement, whichever is longer. This Limited Warranty applies only to the original recipient of the Product and is void if the failure of the Product has resulted from accident, abuse, or misuse.

LP does not warrant that the Product is free from all errors and omissions or is suitable for your intended use. **LP AND ITS SUPPLIERS DISCLAIM ALL OTHER WARRANTIES, EXPRESSED OR IMPLIED, INCLUDING, BUT NOT LIMITED TO, ANY IMPLIED WARRANTY OF MERCHANTABILITY OR FITNESS FOR A PARTICULAR PURPOSE WITH REGARD TO THE PRODUCT OR ACCOMPANYING MATERIALS, OR ANY RELATED SERVICES.**

**6. LIMITATION OF LIABILITY.** IN NO EVENT SHALL LP OR ITS SUPPLIERS HAVE ANY LIABILITY FOR COVER OR FOR ANY INDIRECT, INCIDENTAL, SPECIAL OR CONSEQUENTIAL DAMAGES (INCLUDING WITHOUT LIMITATION ANY LOSS OF PROFITS OR DATA, BUSINESS INTERRUPTION OR OTHER PECUNIARY LOSS) ARISING OUT OF THE USE OR INABILITY TO USE THE PRODUCT OR THE ACCOMPANYING MATERIALS, OR PERFORMANCE OF OR FAILURE TO PERFORM ANY RELATED SERVICES, EVEN IF LP OR ITS SUPPLIERS HAVE BEEN ADVISED OF THE POSSIBILITY OF SUCH DAMAGES. IN NO EVENT SHALL THE AGGREGATE LIABILITY OF LP AND ITS SUPPLIERS (WHETHER IN CONTRACT, WARRANTY, TORT (INCLUDING NEGLIGENCE), PRODUCT LIABILITY OR OTHER THEORY) (i) ARISING OUT OF THE USE OR INABILITY TO USE THE PRODUCT EXCEED YOUR PURCHASE PRICE FOR THE PRODUCT; OR (ii) ARISING OUT OF THE PERFORMANCE OF OR FAILURE TO PERFORM ANY RELATED SERVICES EXCEED THE PRICE YOU PAID FOR SUCH SERVICES DURING THE YEAR IN WHICH THE CLAIM AROSE. Further, LP will not be liable for any delay or failure to perform any related services or any of its obligations under this license as a result of any causes or conditions beyond LP's reasonable control.

**7. U.S. GOVERNMENT RESTRICTED RIGHTS.** If the Product is acquired by an agency or other part of the U.S. Government, the Product and accompanying written materials are provided with **Restricted Rights** and use, duplication or disclosure is subject to restrictions as set forth in subparagraph (c)(1)(ii) of the Rights in Technical Data and Computer Software clause at 48 C.F.R. § 252.227-7013 or in subparagraphs (c)(1) and (2) of the Commercial Computer Software-Restricted Rights clause at 48 C.F.R. § 52.227-19, as applicable. The contractor/manufacturer is Liveware Publishing Inc., at the address described below.

**8. MISCELLANEOUS.** This license constitutes the entire agreement between you and LP regarding the Product and all accompanying materials. LP will not be bound by, and specifically objects to, any provision that is different from or in addition to the provisions of this license (whether or not it would materially alter this license) which is proffered by You in any purchase order, receipt, acceptance, confirmation, correspondence or otherwise (other than terms contained therein identifying the Products and quantities ordered), unless LP specifically agrees in writing to such provision. LP's acceptance of any order by you is expressly conditioned on Your assent to the terms and conditions of this license. Statements or representations made by employees, distributors, resellers or any other third party do not constitute warranties by LP, do not bind LP and should not be relied on by You. **This Agreement is governed by the laws of the State of Delaware without reference to its choice of law principles. The provisions of the 1980 U.N. Convention on Contracts for the International Sale of Goods shall not apply.** If you have any questions concerning this license, please write to:

Liveware Publishing Inc.  
1406 Society Drive  
Claymont, DE 19703

## Product Registration

If you have an available internet connection, you can register your copy of R&R Version 12 during product installation.

Alternatively you can register at a later time on the Liveware web site <http://www.livewarepub.com/prodreg.htm> or you can complete and mail/fax the product registration form that is included with Version 12.

## Contacting Technical Support

Technical Support service gives you access to product experts who can help solve problems you encounter using R&R Report Writer products.

Several options provide you with the level of service you need to get answers in the most timely and cost-effective manner.

### **Capabilities**

Liveware Publishing offers varying levels of service to meet your technical, administrative, and budgetary requirements. From comprehensive support plans to self-service online resources, we've got the right program to fit your needs.

### **Key Benefits**

Help available when you need it — online, email or 800#.

Dedicated, knowledgeable staff — over 50+ years R&R experience.

Cost-effective — pay only for what you use.

### **Option 1 —Pay-per-Call**

At any time between the hours of 8:30 AM and 5:30 PM Eastern Time, you may call 302-791-9446 to speak with a technical support representative.

The fee for support is \$100 per hour, with a minimum charge of \$10 per call.

Payment can be made by credit card (VISA/MC/AMEX). You will not be charged for problems arising from R&R Report Writer software.

(Time is calculated to the closest five dollar time unit, only for time actually spent by a Liveware Publishing support representative resolving the issue. Any time spent is subject to Liveware Publishing management review for effectiveness of the support provided.) (A "call" is defined as phone conversations, e-mail, and voice-mail messages related to resolution (or attempted resolution) of a particular issue. Issues may be grouped in a particular "call" to reach the minimum.)

### **Option 2 —Support/UpgradeAccount**

You can establish a pre-paid support/upgrade account (SUA) with Liveware Publishing to receive a faster response and at a discounted rate.

The cost for opening an SUA account for a single user is \$500, and special pricing is available for multiple user accounts.

Once you have opened an SUA account, at any time between the hours of 8:30 AM and 5:30 PM Eastern Time, you may call the special 800 number to speak with a technical support representative. You may also send an email if you are working outside our normal business hours.

The fee for support is discounted to \$80 per hour, with a minimum charge of \$10 per call. You will not be billed for problems arising from R&R Report Writer software.

In addition, with the purchase of an SUA account you receive the following benefits:

- Installation support during the first 60 days is not chargeable.
- One FREE tech support call.
- One FREE copy of *Relate and Report: Your Guide to Reporting with R&R*. (350 pages, a \$60 value.)
- FREE maintenance releases of R&R Report Writer software.
- Reduced pricing on product upgrades. You may apply any unused portion of your SUA account balance to the purchase of upgrades.
- The balance in your account never expires.

Customers with SUA accounts will be supplied a statement of account usage, upon request, itemizing time spent on each call. Per-call customers will be informed of the time and cost of the call at its conclusion. Requests for review of charges may be sent via e-mail at our web site. Customers with SUAs should deposit sufficient funds to cover reasonable support needs for your organization for at least three months. Automatic re-billing to replenish accounts is available, or you may use a credit card or purchase order.

### **Option 3 —Self ServiceResources**

At any time, you may refer to the Resources page on our web site <http://www.livewarepub.com> for Documentation, Frequently Asked Questions, Technical Bulletins, Service Packs, and other information about R&R Report Writer.

We also offer a User Discussion forum <http://207.5.19.19/cgi-bin/dcforum/dcboard.pl> where you can view and post R&R questions. This forum is monitored by our support staff.

#### **SubscribeNow!**

Complete the form on our web site [http://www.livewarepub.com/ts\\_order.htm](http://www.livewarepub.com/ts_order.htm) to open your Support/Upgrade Account today, or call 800-936-6202 or email us at [livesales@livewarepub.com](mailto:livesales@livewarepub.com) for more information.